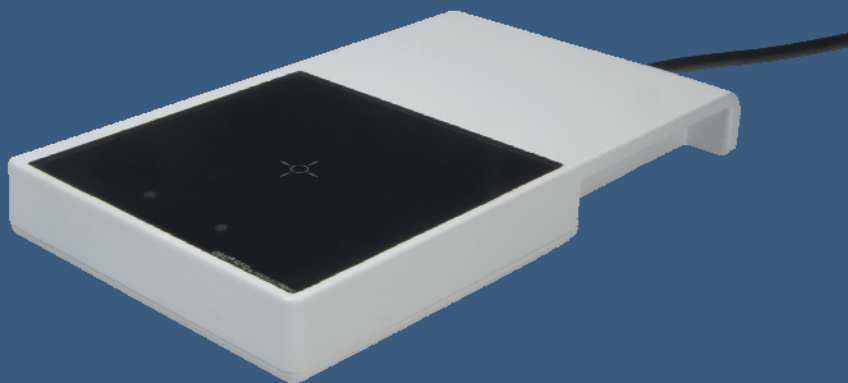


## Desktop Reader ID CPR40.30-x (13.56 MHz)



### FEATURES

- Desktop reader with USB- or RS232 interface to be used in offices or at the PoS
- ISO 14443-A & -B
- Supports NFC applications
- High level support for mifare DESFire EV1 and mifare PLUS
- OBID® ISOHost or PC/SC driver
- Optional: 2 SAM sockets



## ORDER DESCRIPTION

	ID CPR40.30-USB	ID CPR40.30-SUSB	ID CPR40.30-A
Interface	USB		RS232
Supply voltage	USB Port Powered		5 V DC external
SAM socket	-	2	-

## SHORT DESCRIPTION

Desktop readers ID CPR40.30-x with USB- or RS232 interface are designed for contactless data exchange with common transponders according to ISO14443-A and ISO14443-B as well as NFC devices according to ISO 18092. They are ideally suited for several desktop applications just like eTicketing, eDocument, loyalty cards or public transport.

The functions „SoftCrypto“ and „SAMCrypto high level“ offer an comfortable and fast interface for access to encrypted data of mifare DESFire EV1, mifare PLUS and mifare Ultralight C.

Scope of delivery:

- **ID CPR40.30-USB / ID CPR40.30-SUSB**
  - USB cable (A- Mini B plug, black, 2 m)
  - Installation manual
- **ID CPR40.30-A**
  - 2,5 m cable (permanently mounted) for power supply (5,5 mm coaxial connector) and interface (9 pol. D-Sub connector)
  - Installation manual

Software Development Kits for  
Windows®, Windows® CE and Linux: C++, .NET, JAVA

## TECHNICAL DATA

Dimensions (B x H x T)	144 mm x 84 mm x 18 mm
Housing	Plastic (ASA) / acrylic glass
Color	white / black
Weight	approx. 260 g
Protection class	IP 42
Temperature range	-20 °C up to 60 °C (operation) -40 °C up to 85 °C (storage)
Relative air humidity	95 % (non-condensing)
MTBF	500.000 h
Supply voltage	5 V DC +/- 10% ripple
Current consumption	max. 140 mA
Interfaces	- USB Full-Speed (12 MBit/s) - RS232 (4.800 up to 230.400 Baud)
Optical indicators	2 LED (green / blue)
RFID Interface	ISO 14443-A/-B
- Transmission rate	106 ... 848 kBit/s
- Operating frequency	13.56 MHz
- Transmitting power	100 mW
Antenna	integrated
Contact interface	ISO 7816
(only ID CPR40.30-SUSB)	- 2 SAM socket (ID000 format) - T=0 and T=1 protocol - Voltage classes A, B & C
Operation modes	- Polling-Mode - Scan-Mode (only for variants -USB and -A)

Supported transponders:

mifare® classic, mifare® UltraLight, mifare® DESFire EV1, mifare® PLUS, mifare® Ultralight C, my-d® move, my-d® proximity, SLE44R35S, SLE55R, Jewel™, SLE66CL, ST19XR34, SRI4K, SRI4K, SRI512, SR176, etc.  
NFC: Type 2 and Type 4 in Read/Write und NFC Card Emulation Mode

OBID® USB driver for:

Windows® Server 2003 and 2008, Windows® XP SP2, Windows® Vista 32/64 Bit, Windows® 7 32/64 Bit, Windows® CE

PC/SC driver USB (WHQL certificated) and RS232 for:

Windows® Server 2003 and 2008, Windows® XP SP2, Windows® Vista 32/64 Bit, Windows® 7 32/64 Bit

## STANDARD CONFORMITY

Radio approval	
Europe	EN 300 330
EMC	EN 301 489
Safety	
Low voltage	EN 60950
Human Exposure	EN 50364
Environment	WEEE – 2002/96/EC RoHS – 2002/95/EC